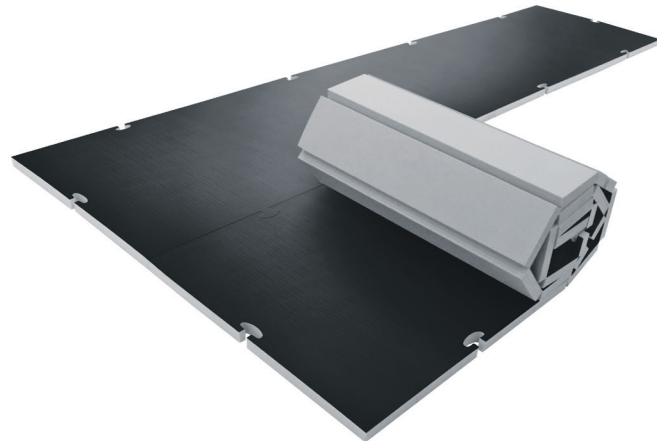


TIS-ROLL

**IT DOES
NOT FEAR
THE WATER!**



INTERLOCKING SYSTEM

[European Patent EP 2 957 328 B1]



PVC SURFACE



TOTALLY WATER RESISTANT



LIGHT



FRAMES AND CORNERS ARE NOT NECESSARY



MODULAR



ProGame Tatami by Trocenen presents **TIS-roll**, the new modular mat design for sports practice. This roll-up mat is easy to set up and quick to put away. It is supplied with special patented links which allow a stable and secure play area to be set up in a matter of minutes. The cross-

linked, closed-cell polyethylene foam and the non-slip PVC surface, guarantee safety and high performance during both professional and amateur practice.



USAGE

< 40 kg/100 kg >

Athlete's weight supported by the tatami



COMPOSITION

PE

Cross-linked expanded polyethylene foam (50 kg/m³), glue-laminated with specially-developed PVC



DIMENSIONS

1000x4000x30 mm

1000x4000x40 mm

1000x4000x50 mm



WEIGHT

10 kg
1000x4000mmx30mm

12 kg
1000x4000mmx40mm

14 kg
1000x4000mmx50mm



COLORS*

- YELLOW**
- RED**
- BLUE**
- OLIVE GREEN**
- BLACK**



EMBOSSING

RICE STRAW



FLAME RETARDANT

NOT AVAILABLE FOR THIS PRODUCT



PACKAGING**

1050x1050x2300 mm

*PVC cover.

**Standard pallet dimensions: 1050x2050x2300 mm. Each pallet is protected in PE film and has cardboard corner protectors.